

Burkina Faso

Number Out of School
1,616,000

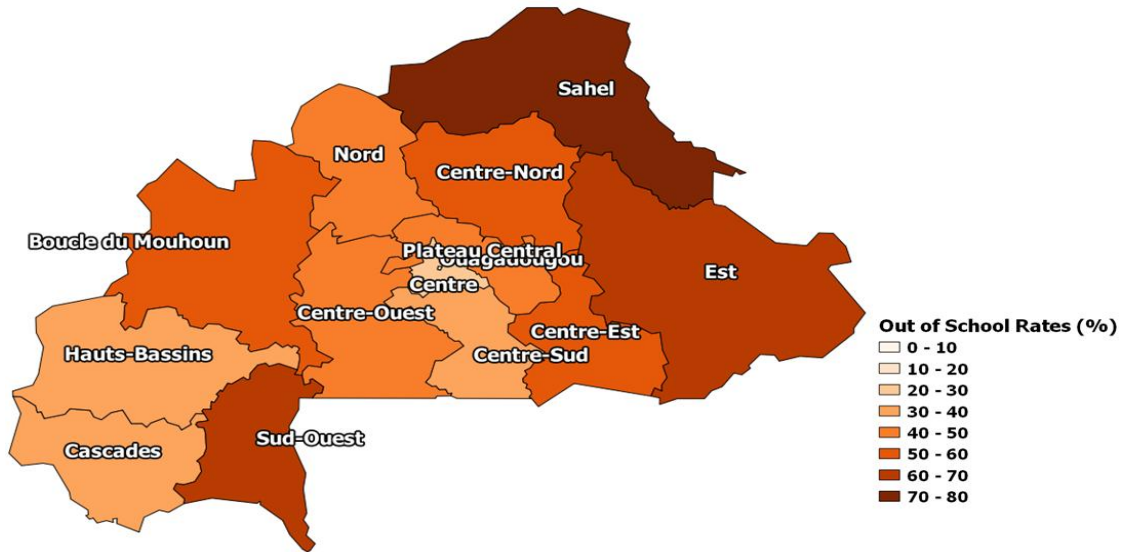
Percent Out of School
48%

Out of School Children of the Population Ages 7-14

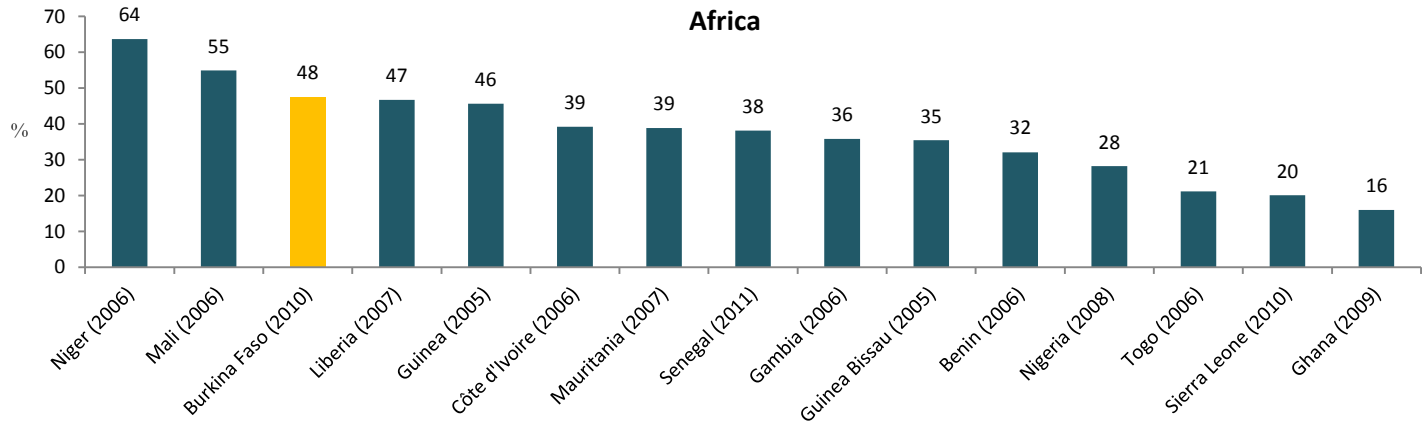
Source: Demographic and Health Survey (DHS) 2010

Comparison of Rates of Out of School Children Ages 7-14 across Burkina Faso

Exact estimated rates and 95% confidence intervals for estimates are provided later in the profile.



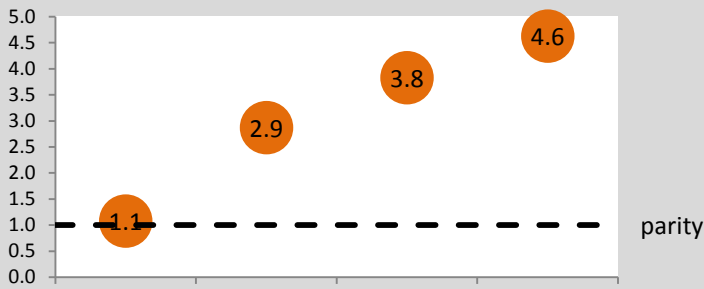
Comparison of Rates of Out of School Children According to the Most Recent Household Survey, Ages 7-14, West Africa



The Structure of the Education System in Burkina Faso

Burkina Faso has a 6-4-3 formal education structure with an official primary school entry age of 6. Basic education includes primary and lower secondary levels. "Post-primaire" refers to the lower secondary level and "secondaire" describes upper secondary level. In principle, basic education is free and compulsory. Students sit for the Certificat d'Études Primaires (CEP) at the end of grade 6, the Brevet d'Études du Premier Cycle (BEPC) at the end of grade 10, and the Baccalauréat de l'Enseignement Secondaire Général at the end of grade 13. (UNESCO IBE, World Data on Education. Revised 12/2010).

Parity Indices



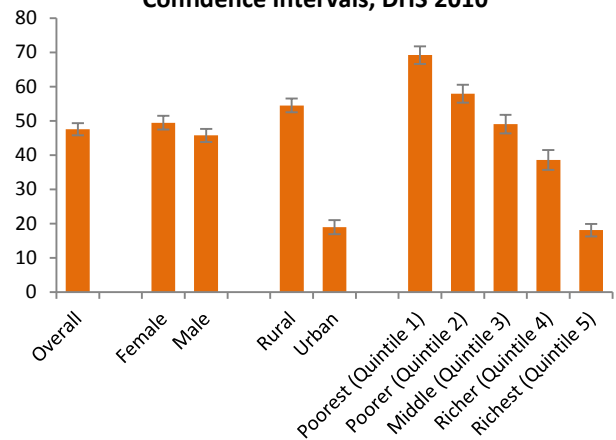
- Parity indices provide information about the greatest sources of inequality in a population. The graph at left provides ratios of different estimates of children aged 7-14 who are out of school. It shows, for example, that the out of school rate in rural areas is 2.9 times higher than that in urban areas.

- For Burkina Faso, the greatest disparity in out of school rates is between children from provinces with the highest and lowest school participation rates. Children from the worst performing province are 4.6 times as likely to be out of school as children from the best.

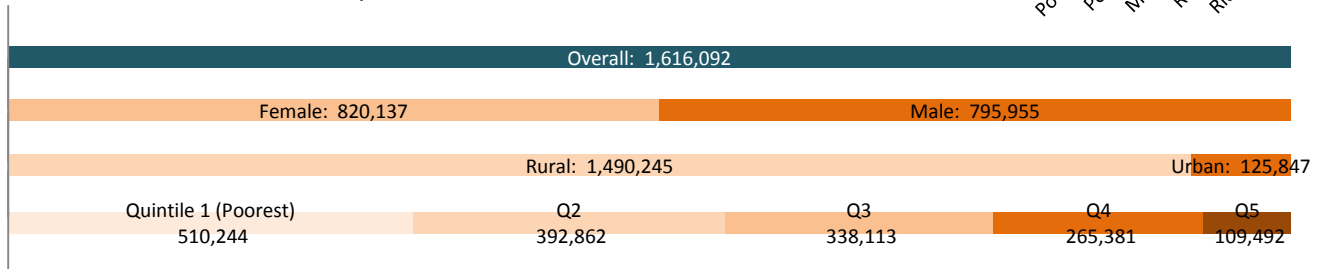
Out of School Children by Individual and Household Characteristics

- More girls (49% or 820,137) are out of school than boys (45.7% or 795,955) in Burkina Faso.
- Out of school rates for children from rural areas (54%) are higher than those for children from urban areas (19%). In terms of absolute numbers, there are more children out of school in rural areas (1,490,245) than in urban areas (125,847).
- Out of school rates are highest for children in the poorest wealth quintile (69%).

Rates of Out of School Children (%), with 95% Confidence Intervals, DHS 2010



Numbers of Out of School Children, DHS 2010



About Data Sources

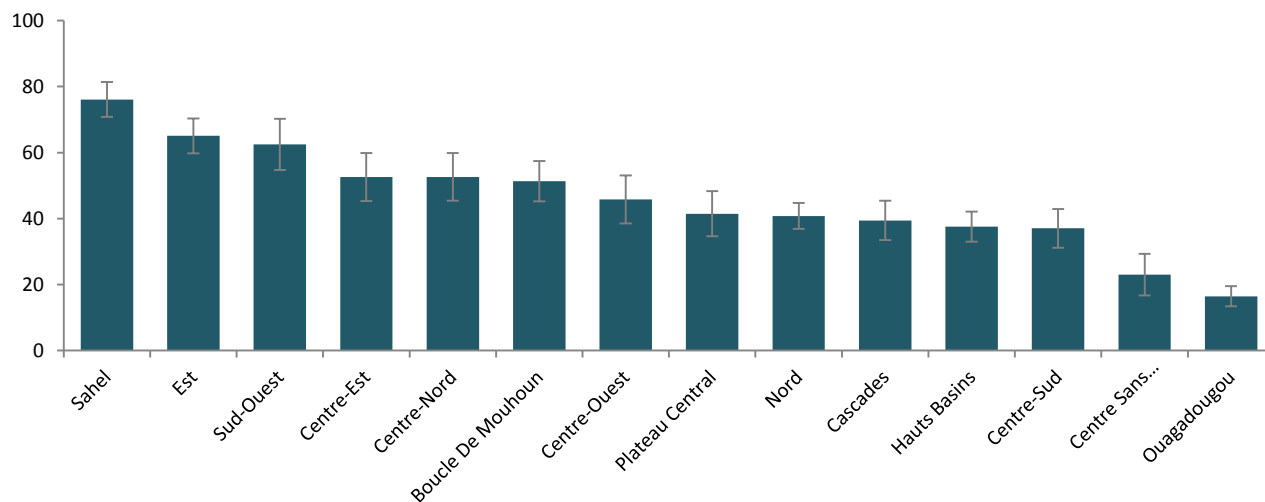
All out of school estimates presented in this profile are EPDC extractions of Demographic and Health Survey (DHS) data. DHS Surveys are conducted every several years and collect information on health, education, and other topics for households and individuals residing in those households. The 2010 Burkina Faso DHS Survey is representative at the national and subnational level. For more information, please see <http://www.measuredhs.com/>.

Estimates of out of school children from household surveys can be expected to differ from administrative estimates, such as those from the UNESCO Institute for Statistics and national government agencies, because of differences between these sources in data collection and estimation methods for measuring school participation. For more information on the differences between these data sources, please see www.epdc.org.

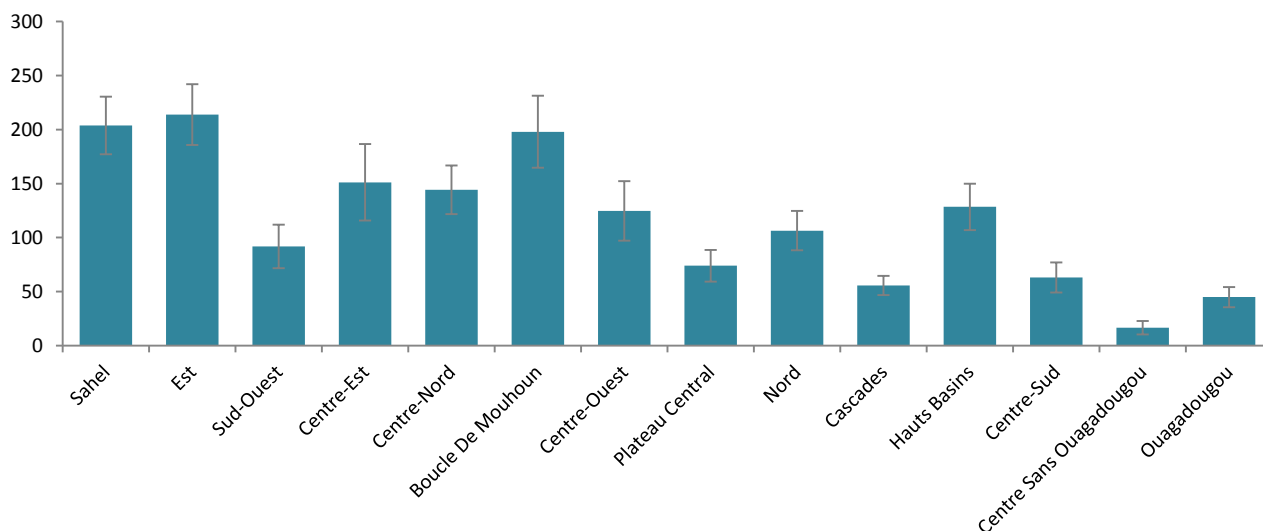
Out of School Children by Subnational Regions

- The subnational region with the highest percentage of children out of school is Sahel (76%). Ouagadougou has the lowest rate of school non-participation (16%).
- The highest numbers of out of school children are located in Est (213,861). Centre Sans Ouagadougou has the lowest numbers of out of school children (16,474).

Rates of Out of School Children by Subnational Region (%), with 95% Confidence Intervals, DHS 2010



Numbers of Out of School Children by Subnational Region (# in thousands), with 95% Confidence Intervals, DHS 2010



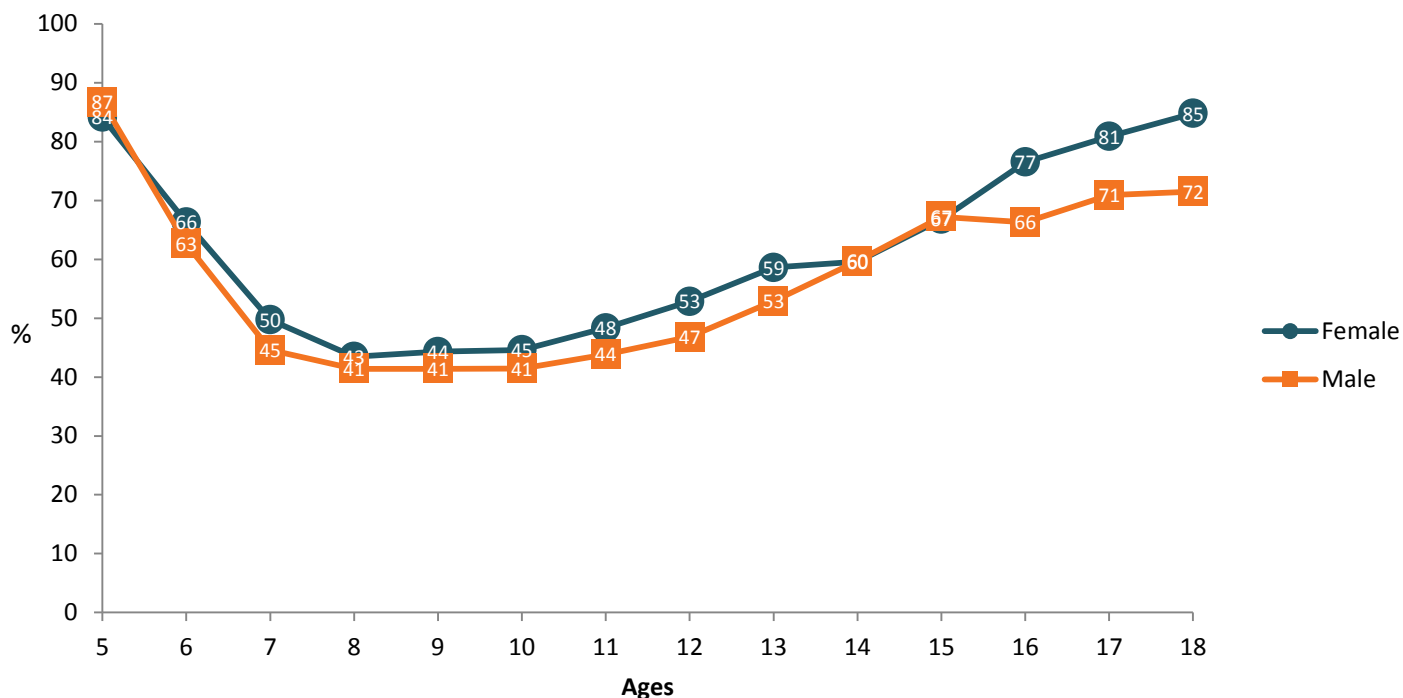
Why Ages 7-14?

EPDC presents data for ages 7-14. This age group captures the bulk of basic compulsory education in most countries, aids cross-national comparability of estimates, and conveys the normative international frameworks set by the Convention on the Rights of the Child and supported by the ILO Minimum Age Convention.

Out of School Rates by Age and Sex

- The official primary school entry age in Burkina Faso is age 6. At that age, 66% of girls and 63% of boys are out of school.
- At age 15, 67% of girls and 67% of boys are out of school.
- School participation is highest for girls at age 8 and for boys at age 8.

Out of School Rates, by Age and Sex



Summary of EPDC Methodology on Measuring Out of School Children

In this profile, EPDC presents estimates of the proportion and number of out of school children of the population ages 7-14 using household survey data. Along with relative and absolute estimates of out of school children, EPDC provides 95% confidence intervals for each estimate.

To create estimates of the proportion of out of school children for a particular school year, EPDC used birthdate information to identify children who were of a particular age range (7-14) on the month that the school year began. Children who had attended primary school or higher at any time during the school year were classified as 'in school;' Children who had not attended school at any time during the school year, or who had attended pre-school during that reference period were classified as 'out of school.' The proportion of children who are out of school is calculated as the number of children within the 7-14 age range who were classified as out of school divided by the number of children within the same age range.

To obtain the number of out of school children, the out-of-school rate is then applied to the estimated population of the same age range from the UN Population Division (EPDC obtained single-age population estimates to build the correct age range). UN Population Division figures are provided for mid-year each year, and EPDC uses the population figures from the year closest to the start of the school year in each country. Depending on a country's main academic calendar, the population figure may be from the year before the school participation year.

For more information on measurement of out of school children, please see the EPDC website at www.epdc.org.

EPDC Estimated Rates and Numbers of Out of School Children based on DHS 2010 Presented with 95% Confidence Intervals

	Lower limit of 95% confidence interval	Estimated proportion of out of school children of the population ages 7-14 (%)	Upper limit of 95% confidence interval	Lower limit of 95% confidence interval	Estimated number of out of school children of the population ages 7-14 (#)	Upper limit of 95% confidence interval
National	46	48	49	1,532,703	1,616,092	1,699,482
Sex						
Female	47	49	51	773,841	820,137	866,433
Male	44	46	48	748,237	795,955	843,673
Area						
Rural	52	54	56	1,408,526	1,490,245	1,571,964
Urban	17	19	21	109,238	125,847	142,456
Relative Wealth						
Poorest Quintile	67	69	72	463,534	510,244	556,954
Poorer Quintile	55	58	60	357,517	392,862	428,207
Middle Quintile	46	49	52	306,195	338,113	370,032
Richer Quintile	36	39	41	234,796	265,381	295,965
Richest Quintile	16	18	20	93,718	109,492	125,266
Regions						
Sahel	71	76	81	177,152	203,839	230,526
Est	60	65	70	185,762	213,861	241,959
Sud-Ouest	55	62	70	71,689	91,775	111,861
Centre-Est	45	53	60	115,770	151,138	186,506
Centre-Nord	45	53	60	121,739	144,214	166,688
Boucle De Mouhoun	45	51	57	164,606	198,021	231,435
Centre-Ouest	39	46	53	96,979	124,672	152,365
Plateau Central	35	41	48	59,227	73,896	88,565
Nord	37	41	45	88,074	106,307	124,541
Cascades	33	39	45	46,761	55,707	64,654
Hauts Basins	33	38	42	106,968	128,417	149,866
Centre-Sud	31	37	43	48,954	62,946	76,937
Centre Sans Ouagadougou	17	23	29	10,327	16,474	22,622
Ouagadougou	13	16	19	35,448	44,826	54,204